



INDEPENDENT
ROUGH TERRAIN CENTER

IRTC RT250

Performance Knows No Boundaries



THE ONE-OF-A-KIND **ROUGH TERRAIN** **CONTAINER HANDLER**

Master rough terrain logistics with the Rough Terrain Container Handler (RTCH) RT250, and its exceptional mobility, high throughput, and operator safety systems. The unparalleled design, low ground pressure, and year-round performance of the RT250 ensure smooth operation no matter the conditions.

PURPOSE-DRIVEN DESIGN



Built To Last More Than A Lifetime

Constructed with the utmost resilience in mind, the RT250 can withstand the most unforgiving environments. Its robust steel frame and meticulous design make it an unwavering asset in unpredictable conditions.

Engineered To Go Wherever The Job Takes It

Innovative folding boom design allows for transport without the need for disassembly or special tools. Easily transported by road, ship, rail, or air, this workhorse is ready for any logistical challenge.

Unrivalled Capacity And Reach

With its remarkable lifting capacity of 56,000 lb (25,454 kg), towering max lift height of 33' 9" (10,300 mm) and expansive max reach of 20' 7" (6,273 mm) the RT250 effortlessly handles even the heaviest loads.

Powerful And Flexible

Equipped with a robust Cummins diesel engine, along with 2-Wheel and 4-Wheel Drive, 2-Wheel, 4-Wheel and Crab Steering, plus a remarkable 32.6' turning radius and capable of navigating 27% inclines while fully loaded, the RT250 operates in extreme rough terrain and confined spaces with effortless agility.



The RTCH RT250

Built to go where roads don't, performing like no other. Schedule a demo today by calling (210) 599-6541.



UNMATCHED VERSATILITY **AND FLEXIBILITY**

Accomplish Even More With Multiple Attachments For The RT250



Sling Lift Attachment

The sling lift attachment allows the RT250 to lift heavy objects up to 48,000 lb (21,772 kg). It can handle different types of cargo, like barriers and construction equipment, and is easy to attach and remove.

Key benefits:

- Increased versatility for handling different types of loads
- Easy to attach and remove without additional tools using the RT250's top handler twist locks



Forklift Attachment

The forklift attachment easily connects to the top handler. It has adjustable fork tines that can handle a variety of cargo, including standard and odd-sized containers.

Key benefits:

- Easy to attach and remove
- Adjustable fork tines for handling different cargo
- Lift capacity of 44,000 lb (19,958 kg)



Tool Carrier

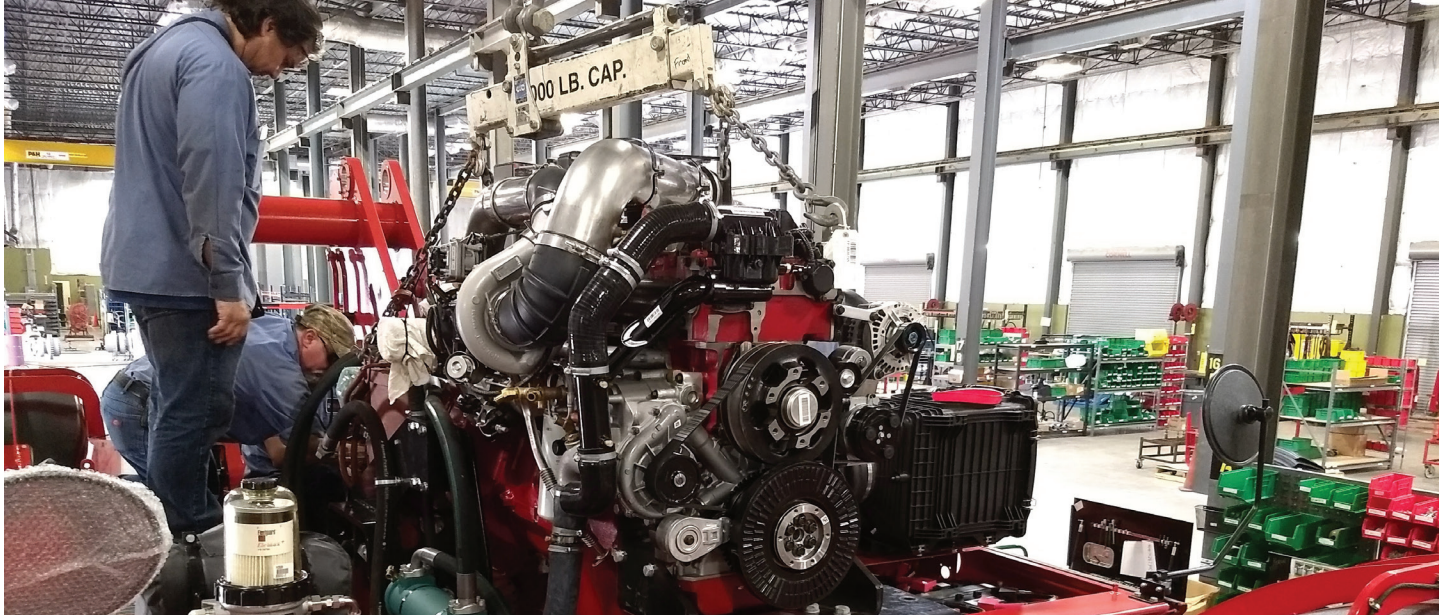
This universal attachment condenses the footprint of the top handler, giving it more capacity and improved maneuverability. The twist lock feature makes for simple swapping of attachments anywhere.



Hook Attachment

With a lifting capacity of 31,751 kg (70,000 lb.), the Hook Attachment allows operators to handle a wider range of materials in remote locations where cranes may be impractical or unavailable. By integrating the Hook Attachment, customers can reduce dependency on cranes, increase operational efficiency, and significantly improve workflow in rugged environments.

As the OEM, IRTC's engineers are able to customize the RT250 and develop specific attachments to meet the customers needs.



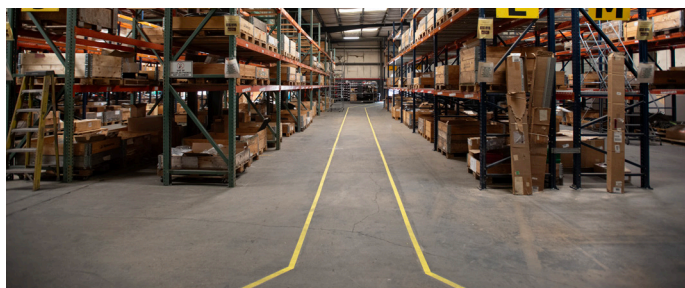
NEXT-LEVEL CUSTOMER SERVICE

Providing Superior Support, Service And Training With IRTC-Care



Service And Support

IRTC-Care offers comprehensive global support for the RT250, warranty processing, and training courses for operators and technicians.



Genuine OEM Parts

We take pride in ensuring that OEM parts are readily available for our customers. We recognize that equipment uptime is crucial for your productivity and schedule adherence. Our Parts Distribution Center employs systems to maintain robust stock levels of our Genuine IRTC Parts and deliver them promptly.



Training

Training courses conducted by IRTC's experienced trainers are offered at our facility in Cibolo, Texas. The 40- or 80-hour course work utilizes extensive training aids developed by IRTC exclusively for the RT250 RTCH. Off-site operator and technician training, as well as refresher courses are also available.

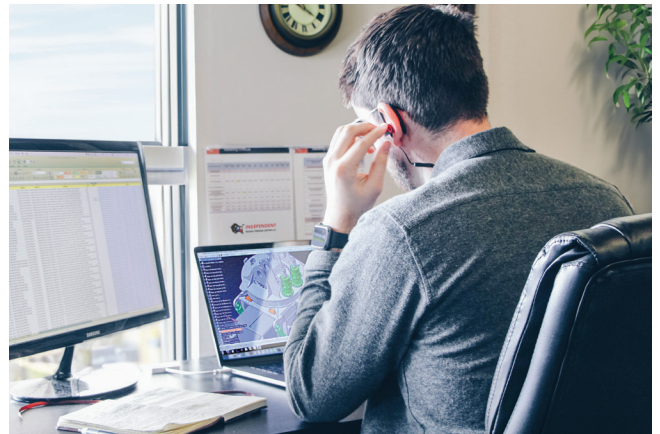
CONTINUOUS INNOVATION

Meeting Tomorrow's Rough Terrain Logistics Needs, Today

The IRTC Development Center is pioneering new technologies that will help improve the efficiency and safety of rough terrain logistics for today's operators. With dedicated in-house engineering staff, we are innovating in areas such as robotics and sustainability, to make the RT250 even more versatile.

In partnership with prestigious universities and robotics engineering centers, we are advancing the use of robotic technology in expeditionary containerized logistics by developing a modular automation package (MAP). Included in this research are features such as:

- Container engagement and placement
- Vehicle alignment and movement
- Safety checks
- Command and Control



IRTC Engineers in partnership with leading OEMS, are developing sustainable solutions for rough terrain logistics, such as a diesel electric drivetrain in the RT250 system that will:

- Reduce emissions
- Increase fuel economy
- Provide a more productive RTCH
- Offer greater drivetrain reliability
- Lower parts sustainment cost
- Include a Continuously Variable Transmission (CVT) for smooth operations
- Off-board electrical power



PURPOSE-BUILT TO **CONQUER** **EVERY CHALLENGE**

Born from the specific needs of the U.S. Army, the RT250 Rough Terrain Reach Stacker emerged as a critical solution for handling containerized supplies in areas with damaged or nonexistent infrastructure.

Since its inception, over 1,300 RT250s have been deployed to the U.S. Military and its allies. This widespread adoption, coupled with the containerization of supplies, has revolutionized military logistics, ensuring the efficient delivery of essential goods to soldiers in combat zones and areas affected by natural disasters.



RT250 SPECIFICATIONS

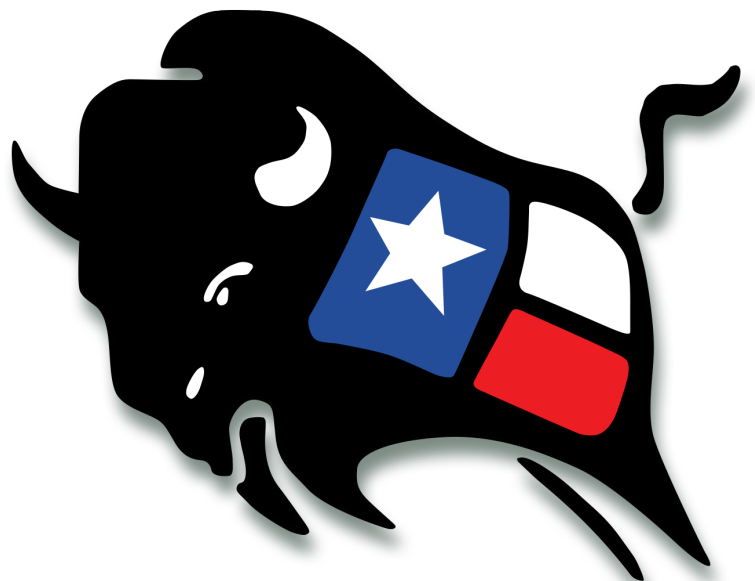
Engine		US EPA Tier III	US EPA Tier IV Final	Performance	
Make	Cummins	Cummins	Cummins	Travel Speed (Unladen)	37 km/h; 23 mph
Model	QSM11	QSG12	QSG12	Travel Speed (Laden)	24 km/h; 15 mph
Cylinder	6	6	6	Travel Speed (Reverse, Max)	11.3 km/h; 7 mph
Power	298 kW/400HP	298 kW/400HP	298 kW/400HP	Gradeability	at 3 km/h; 2 mph
Displacement	10.8 L/661 cu in.	11.8 L/720 cu in.	11.8 L/720 cu in.	Unladen	27%
Cooling	Hydraulic driven, variable speed fan	Hydraulic driven, variable speed fan	Hydraulic driven, variable speed fan	Laden	27%
Fuel	Diesel/JP-8/JP-5	ULSD Diesel #1 or #2	ULSD Diesel #1 or #2	Fording Depth	1.52 m; 60 in

Transmission		Weight	
Make	ZF	Curb Weight	53,751 kg; 118,500 lbs
Model	4 WG310	Front Axle	29,121 kg; 64,200 lbs
Gears	4 Forward, 3 Reverse	Rear Axle	24,630 kg; 54,300 lbs

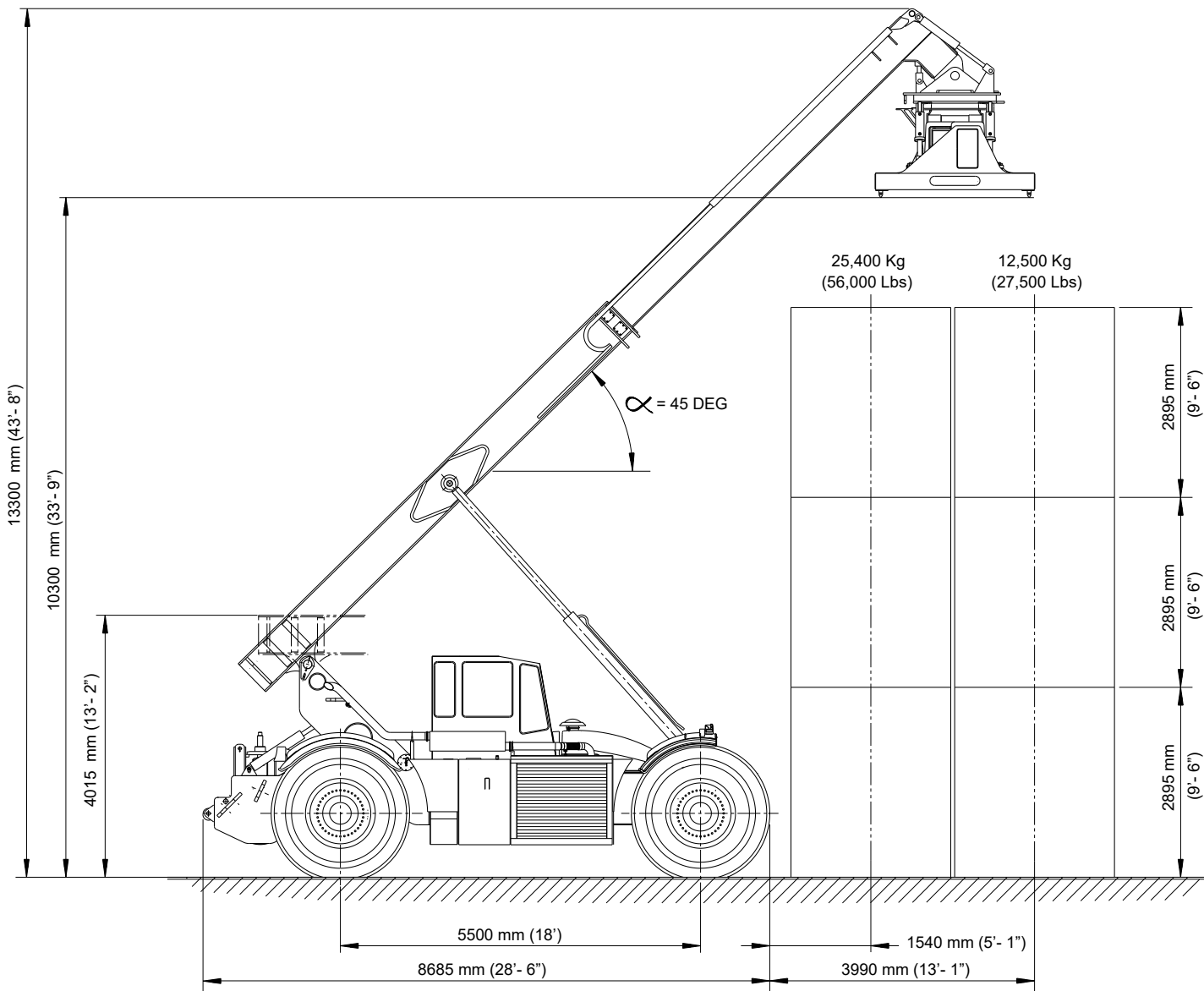
Axles		Service Capabilities	
Make	Kessler	Fuel Tank	390 L; 103 gal
Model (Front)	LT102PL341/528NLB4650	Hydraulic Tank	681 L; 180 gal
Model (Rear)	LT102PL341/528NLB4660		

Brakes		Additional Data	
Service	Hydraulically operated and cooled, in-board, wet disk type	Electrical System	24V DC
Parking	Spring applied / hydraulic released	Alternator	105 Amps

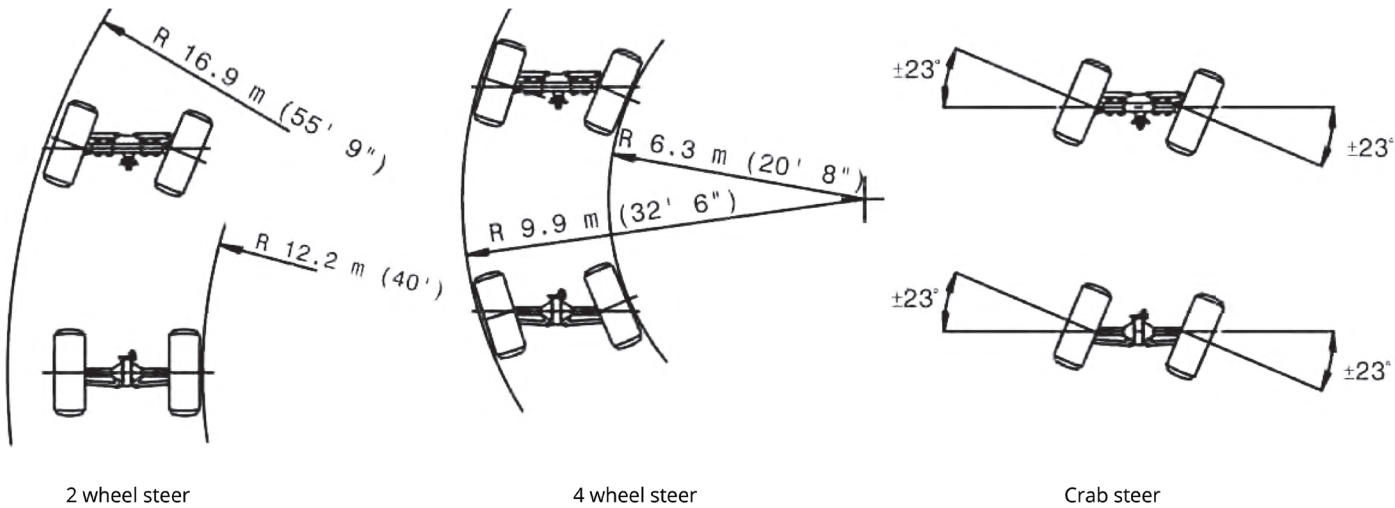
Tires	
Size	29.5 - 35



Capacity - Container Handling



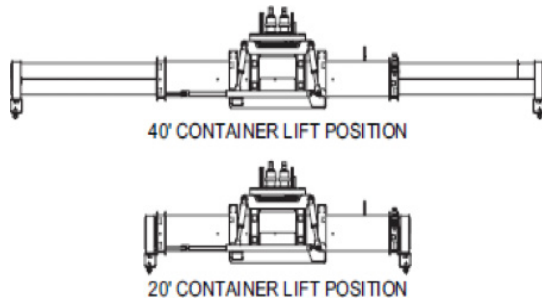
Steering Modes



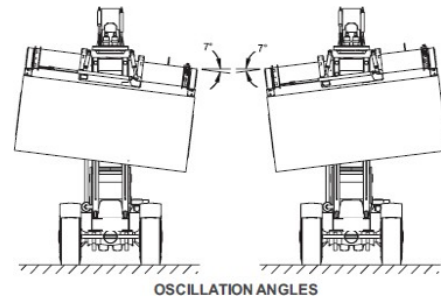
THE RTCH IN DETAIL

Container Handling

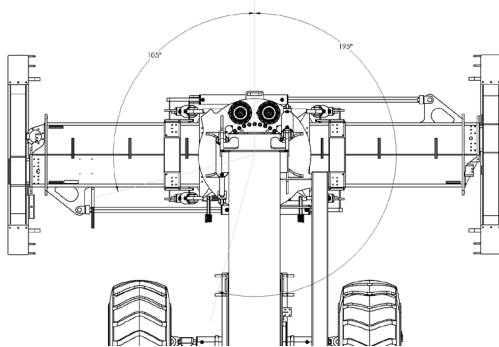
Tophandler adjusts to 20 ft (6.10 m)
or
40 ft (12.19 m) ISO container lengths



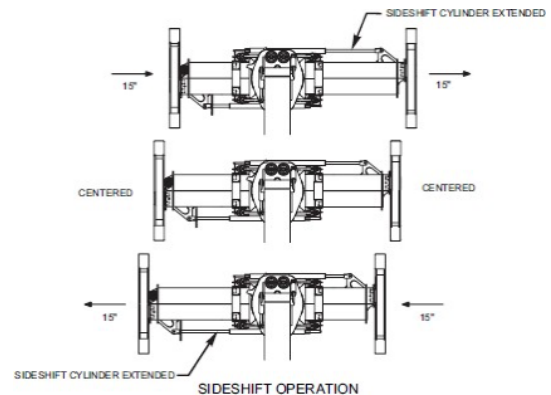
Tophandler Oscillates +/- 7 Degrees



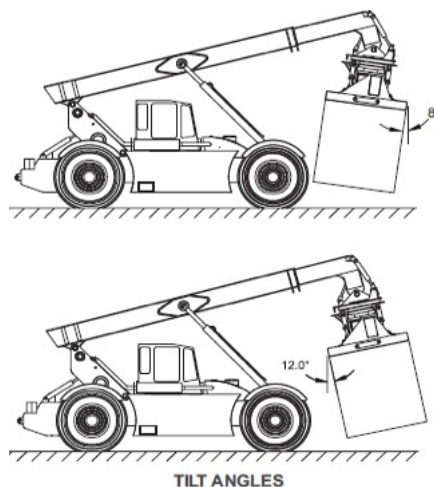
Tophandler rotates 195 degrees clockwise
and 105 degrees counterclockwise



Tophandler Side Shifts
+/- 15 inches (+/- 38.1mm)

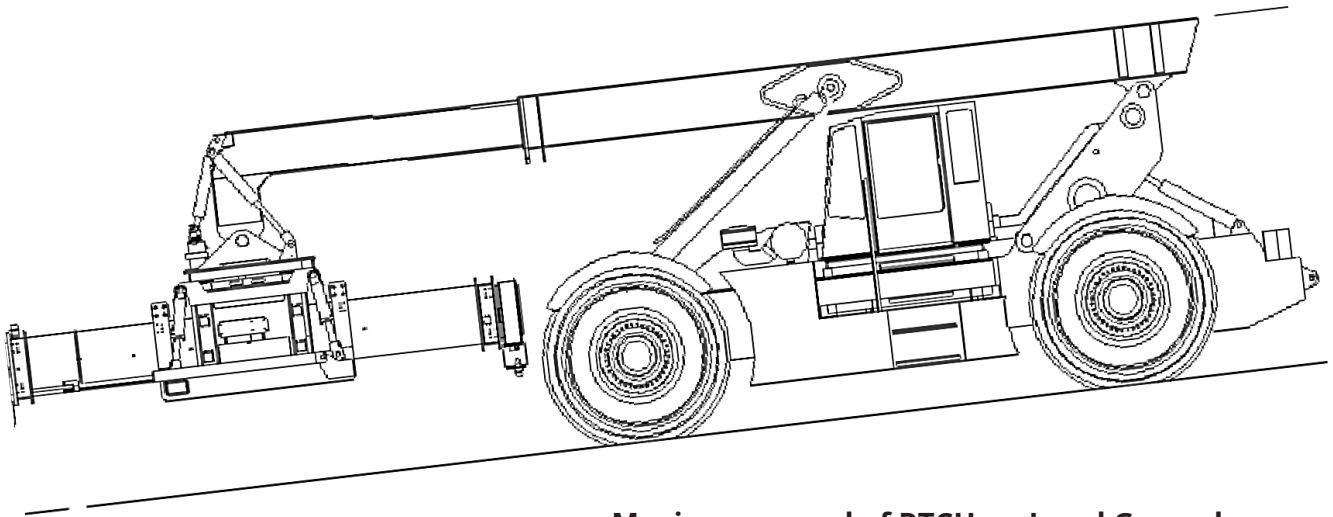


Tophandler Tilts 12 degrees Forward and 8
degrees to the Rear



THE RTCH IN DETAIL

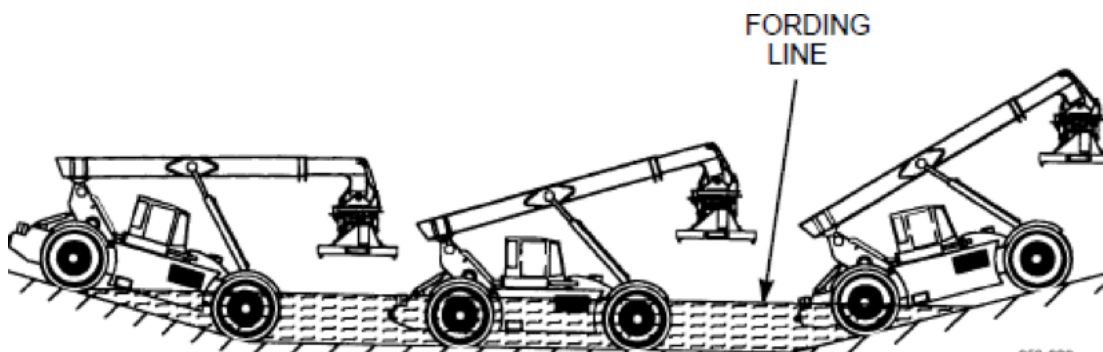
Vehicle



Maximum speed of RTCH on Level Ground:

- 23 mph (37 kph) NO LOAD Forward
- 15 mph (24 kph) LOADED Forward
- 7 mph (11 kph) Reverse

Maximum Traveling Slope: 27 Percent (15 Degrees)

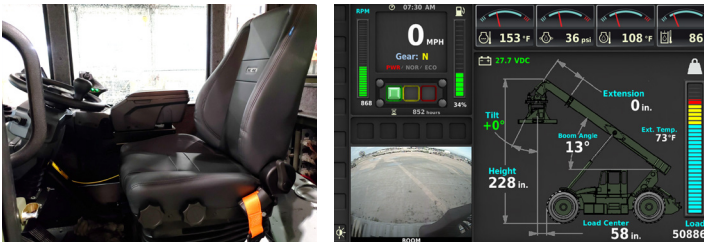


Maximum fording depth: 60 in. (1.52 m)

Operation in temperatures from: -40°F to 125°F (-40°C to 52°C)

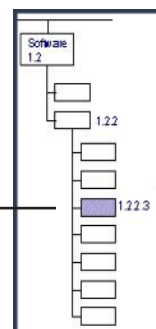
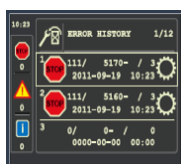
THE RTCH IN DETAIL

Cab Controls and Diagnostics



- Ergonomic multi-function joystick
- Power adjustable armrest & steering column
- Sealed IP68 rocker switches and membrane button panels
- Storage compartment in armrest
- Tens of thousands of commercial systems fielded internationally since 2010
- Ergonomic multi-adjustable seat
 - Rugged, modern materials
 - Superior side bolstering
 - Seat-belt safety switch
 - Occupant safety switch
 - Power adjustable steering column with Dual-axis tilt adjustment for safer and more ergonomic one-hand steering
- Dashboard, rugged aluminum construction includes laser etched control symbols and dashboard contains buttons and switches for HVAC controls

- The new Danfoss Plus+1 Control System features a modern CANopen & J1939 CAN based communication architecture.
- The addition the new 10inch Plus +1 HMI display, allows for improved diagnostic capabilities and the ability to dive deeper into the diagnostic codes for more specific treatment of maintenance issues, reducing downtime.



5560IS	93	Relay reverse alarm - Abnormally low current or open circuit.	WARNING!
--------	----	---	----------

THE RTCH IN DETAIL

Cameras and Radar System

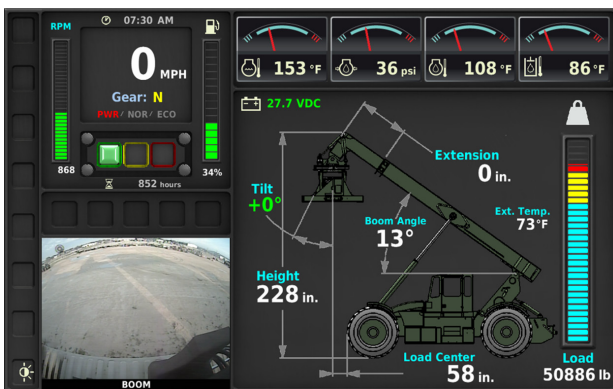


Rear View Camera

- 118 Degree Field Of View
- Switched IR emitters
- Automatic rear camera activation when in reverse gear
- IP68 Rating with internal heaters to prevent fogging
- Vibration resistance up to 15.3G at 24 to 2000 Hz

Rear Radar Eyes

- 170 Degree detection zone
- Detects object(s) within 5 meters
- Audible alert via dashboard speaker
- Visual indicator via 10-inch display unit



Display Normal Operational



Reverse operation screen
Full screen with object detection warning

THE IRTC **DIFFERENCE**

Purpose-Driven From The Day We Started

Over 25 years of providing the best solutions to conquer every environment and terrain. Dating back to 1996, our objective has been to develop and produce a multi-dimensional lifting machine that is capable of safely moving and stacking 20' and 40' ISO shipping containers and more in rough terrain.

The RTCH can go anywhere someone might need to move an ISO container or other heavy materials and provides road mobility as a self-deployable vehicle.

The result of a significant design effort was the RTCH RT250.



FOR OVER
25 YEARS

CONTACT US TODAY ABOUT **THE RT250** **AND ALL YOUR ROUGH TERRAIN HEAVY** **LOGISTICS NEEDS**

Location And Main Phone Number:

103 Guadalupe Drive
Cibolo, TX 78108
(210) 599 6541

Service And Support:

The IRTC Service Department can be reached
24/7 by phone or email:
Monday – Friday 8:00am – 5:00pm CST
(210) 599-3478 during office hours

24/7 Support Line:

(800) 558-7232 outside of office hours

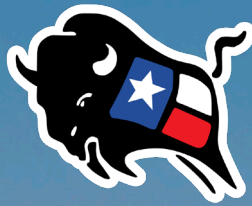
Email:

warranty.service@irtc-tx.com
parts@irtc-tx.com

For New/Used Equipment:

sales@irtc-tx.com





INDEPENDENT

ROUGH TERRAIN CENTER

103 Guadalupe Drive
Cibolo, TX 78108
(210) 599-6541

Copyright ©2025 Independent Rough Terrain Center, LLC. All rights reserved. No part of this publication may be reproduced by any means without written permission from Independent Rough Terrain Center, LLC (IRTC). The information in this publication is believed to be accurate. However, IRTC does not make any representation or warranty to that effect and does not assume responsibility for any consequences resulting from use of such information. Revisions or new editions of this publication may or may not be issued at our discretion to incorporate such changes. IRTC reserves the right to change specifications without notice. Illustrations and specifications shown may include optional equipment and accessories.

Scan this code to
custom configure your RT250,
and request a quote today

