



**INDEPENDENT**  
ROUGH TERRAIN CENTER LLC

# IRTC RT240

Performance Knows No Boundaries



# 2024

# THE ONE-OF-A-KIND **ROUGH TERRAIN** **CONTAINER HANDLER**

Master rough terrain logistics with the Rough Terrain Container Handler (RTCH) RT240, and its exceptional mobility, high throughput, and operator safety systems. The unparalleled design, low ground pressure, and year-round performance of the RT240 ensure smooth operation no matter the conditions.

## PURPOSE-DRIVEN DESIGN



### **Built To Last More Than A Lifetime**

Constructed with the utmost resilience in mind, the RT240 can withstand the most unforgiving environments. Its robust steel frame and meticulous design make it an unwavering asset in unpredictable conditions.

### **Engineered To Go Wherever The Job Takes It**

Innovative folding boom design allows for transport without the need for disassembly or special tools. Easily transported by road, ship, rail, or air, this workhorse is ready for any logistical challenge.

## Unrivaled Capacity And Reach

With its remarkable lifting capacity of 56,000 lb (25,454 kg), towering max lift height of 33' 9" (10,300 mm) and expansive max reach of 20' 7" (6,273 mm) the RT240 effortlessly handles even the heaviest loads.

## Powerful And Flexible

Equipped with a robust Cummins diesel engine, along with 2-Wheel and 4-Wheel Drive, 2-Wheel, 4-Wheel and Crab Steering, plus a remarkable 32.6' turning radius and capable of navigating 27% inclines while fully loaded, the RT240 operates in extreme rough terrain and confined spaces with effortless agility.



# PROVEN PERFORMANCE

### The RTCH RT240

Built to go where roads don't, performing like no other. Schedule a demo today by calling (210) 599-6541.



# UNMATCHED VERSATILITY **AND FLEXIBILITY**

## Accomplish Even More With Multiple Attachments For The RT240

### **Sling Lift Attachment**

The sling lift attachment allows the RT240 to lift heavy objects up to 48,000 lb (21,772 kg). It can handle different types of cargo, like barriers and construction equipment, and is easy to attach and remove.

#### **Key benefits:**

- Increased versatility for handling different types of loads
- Easy to attach and remove without additional tools using the RT240's top handler twist locks
- Can be transported by road, ship, rail, or air



### **Forklift Attachment**

The forklift attachment easily connects to the top handler. It has adjustable fork tines that can handle a variety of cargo, including standard and odd-sized containers.

#### **Key benefits:**

- Easy to attach and remove
- Adjustable fork tines for handling different cargo
- Lift capacity of 44,000 lb (19,958 kg)

### **Tool Carrier**

This universal attachment condenses the footprint of the top handler, giving it more capacity and improved maneuverability. The twist lock feature makes for simple swapping of attachments anywhere.



**As the OEM, IRTC's engineers are able to customize the RT240 and develop specific attachments to meet the customers needs.**



## **NEXT-LEVEL CUSTOMER SERVICE**

**Providing Superior Support, Service And Training With IRTC-Care**



### **Service And Support**

IRTC-Care offers comprehensive global support for the RT240, warranty processing, and training courses for operators and technicians.



### **Genuine OEM Parts**

We take pride in ensuring that OEM parts are readily available for our customers. We recognize that equipment uptime is crucial for your productivity and schedule adherence. Our Parts Distribution Center employs systems to maintain robust stock levels of our Genuine IRTC Parts and deliver them promptly.



### **Training**

Training courses conducted by IRTC's experienced trainers are offered at our facility in Cibolo, Texas. The 40- or 80-hour course work utilizes extensive training aids developed by IRTC exclusively for the RT240 RTCH. Off-site operator and technician training, as well as refresher courses are also available.

# CONTINUOUS INNOVATION

## Meeting Tomorrow's Rough Terrain Logistics Needs, Today

The IRTC Development Center is pioneering new technologies that will help improve the efficiency and safety of rough terrain logistics for today's operators. With dedicated in-house engineering staff, we are innovating in areas such as robotics and sustainability, to make the RT240 even more versatile.

In partnership with prestigious universities and robotics engineering centers, we are advancing the use of robotic technology in expeditionary containerized logistics by developing a modular automation package (MAP). Included in this research are features such as:

- Container engagement and placement
- Vehicle alignment and movement
- Safety checks
- Command and Control



IRTC Engineers in partnership with leading OEMS, are developing sustainable solutions for rough terrain logistics, such as a hybrid electric drivetrain in the RT240 system that will:

- Reduce emissions
- Increase fuel economy
- Provide a more productive RTCH
- Offer greater drivetrain reliability
- Lower parts sustainment cost
- Include a Continuously Variable Transmission (CVT) for smooth operations
- Off-board electrical power



# PURPOSE-BUILT TO CONQUER EVERY CHALLENGE

Born from the specific needs of the U.S. Army, the RT240 Rough Terrain Reach Stacker emerged as a critical solution for handling containerized supplies in areas with damaged or nonexistent infrastructure.

Since its inception, over 1,300 RT240s have been deployed to the U.S. Military and its allies. This widespread adoption, coupled with the containerization of supplies, has revolutionized military logistics, ensuring the efficient delivery of essential goods to soldiers in combat zones and areas affected by natural disasters.



# RT240 SPECIFICATIONS

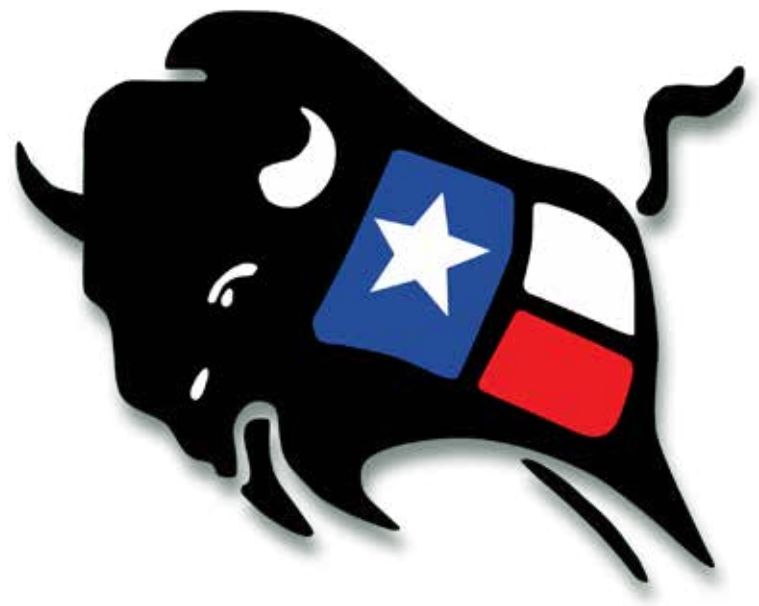
<b>Engine</b>			<b>Performance</b>	
US EPA Tier III	US EPA Tier IV Final		Travel Speed (Unladen)	37 km/h; 23 mph
Make	Cummins	Cummins	Travel Speed (Laden)	24 km/h; 15 mph
Model	QSM11	QSG12	Travel Speed (Reverse, Max)	11.3 km/h; 7 mph
Cylinder	6	6	Gradeability	at 3 km/h; 2 mph
Power	298 kW/400HP	298 kW/400HP	Unladen	27%
Displacement	10.8 L/661 cu in.	11.8 L/720 cu in.	Laden	27%
Cooling	Hydraulic driven, variable speed fan	Hydraulic driven, variable speed fan	Fording Depth	1.52 m; 60 in
Fuel	Diesel/JP-8/JP-5	ULSD Diesel #1 or #2		

<b>Transmission</b>		<b>Weight</b>	
Make	ZF	Curb Weight	53,751 kg; 118,500 lbs
Model	4 WG310	Front Axle	29,121 kg; 64,200 lbs
Gears	4 Forward, 3 Reverse	Rear Axle	24,630 kg; 54,300 lbs

<b>Axles</b>		<b>Service Capabilities</b>	
Make	Kessler	Fuel Tank	390 L; 103 gal
Model (Front)	LT102PL341/528NLB4650	Hydraulic Tank	681 L; 180 gal
Model (Rear)	LT102PL341/528NLB4660		

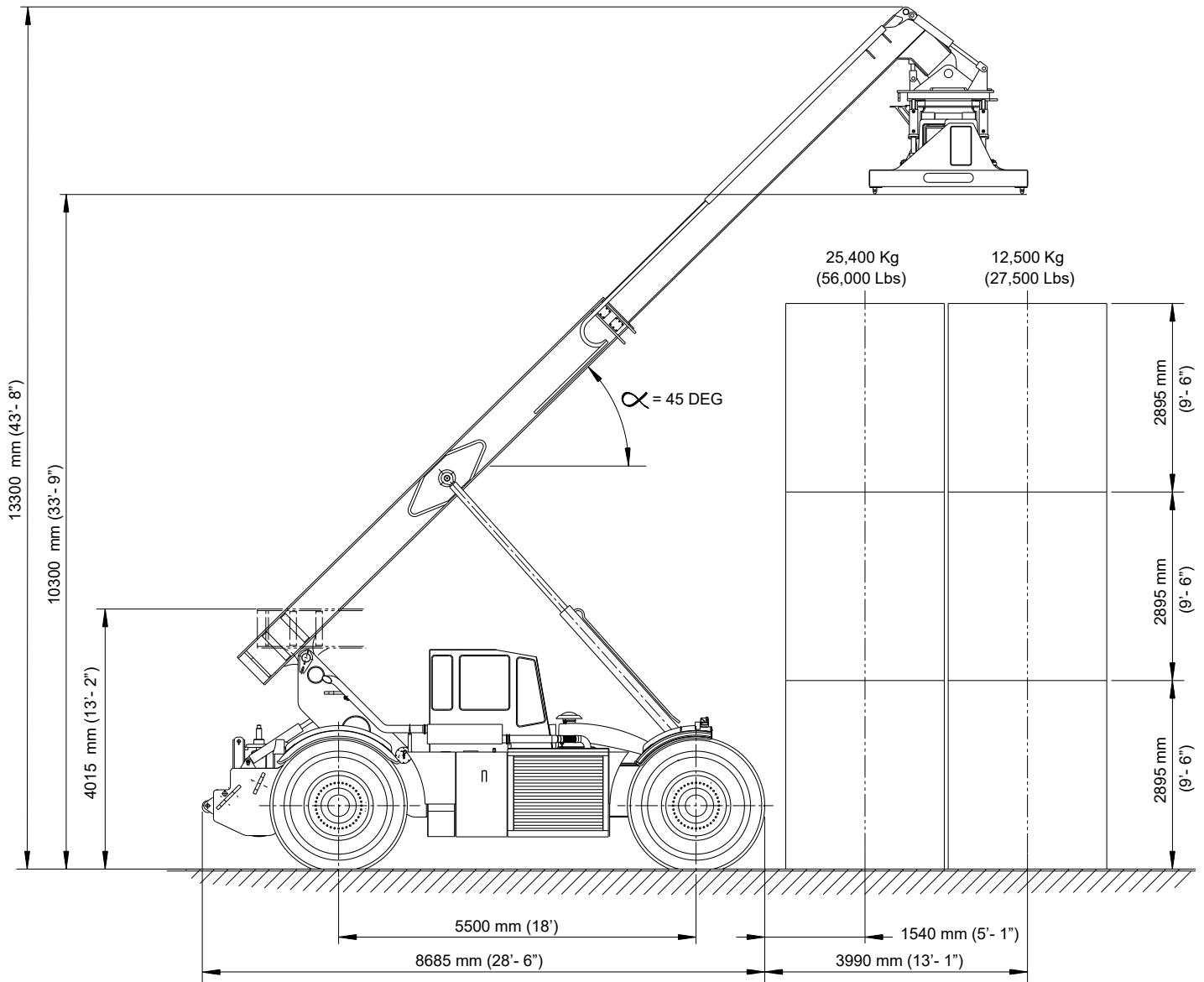
<b>Brakes</b>		<b>Additional Data</b>	
Service	Hydraulically operated and cooled, in-board, wet disk type	Electrical System	24V DC
Parking	Spring applied / hydraulic released	Alternator	105 Amps

<b>Tires</b>	
Size	29.5 - 35

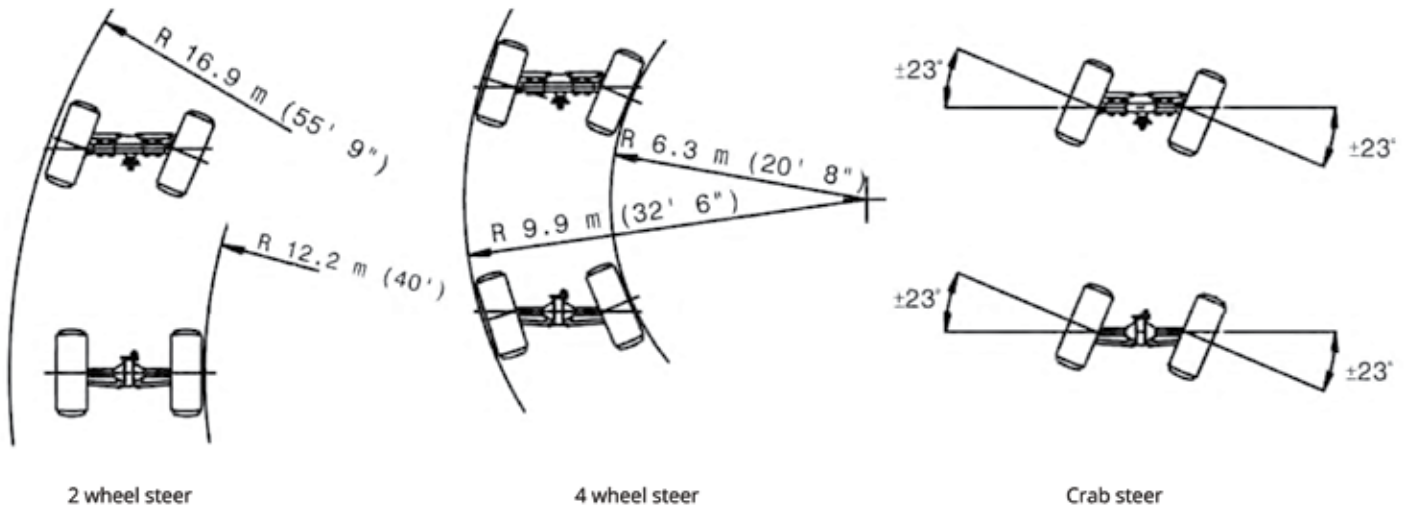




## Capacity - Container Handling



## Steering Modes



# THE IRTC **DIFFERENCE**

## Purpose-Driven From The Day We Started

Over 25 years of providing the best solutions to conquer every environment and terrain. Dating back to 1996, our objective has been to develop and produce a multi-dimensional lifting machine that is capable of safely moving and stacking 20' and 40' ISO shipping containers and more in rough terrain.

The RTCH can go anywhere someone might need to move an ISO container or other heavy materials and provides road mobility as a self-deployable vehicle.

The result of a significant design effort was the RTCH RT240.

# FOR OVER 25 YEARS



# CONTACT US TODAY ABOUT **THE RT240** **AND ALL YOUR ROUGH TERRAIN HEAVY** **LOGISTICS NEEDS**

---

**Location And Main Phone Number:**

103 Guadalupe Drive  
Cibolo, TX 78108  
(210) 599 6541

**Service And Support:**

The IRTC Service Department can be reached  
24/7 by phone or email:  
Monday – Friday 8:00am – 5:00pm CST  
(210) 599-3478 during office hours

**24/7 Support Line:**

(800) 558-7232 outside of office hours

**Email:**

warranty.service@irtc-tx.com  
parts@irtc-tx.com

**For New/Used Equipment:**

sales@irtc-tx.com



**CONQUERING  
EVERY TERRAIN**



# INDEPENDENT

**ROUGH TERRAIN CENTER LLC**

---

103 Guadalupe Drive  
Cibolo, TX 78108  
(210) 599-6541

Copyright ©2024 Independent Rough Terrain Center, LLC. All rights reserved. No part of this publication may be reproduced by any means without written permission from Independent Rough Terrain Center, LLC (IRTC). The information in this publication is believed to be accurate. However, IRTC does not make any representation or warranty to that effect and does not assume responsibility for any consequences resulting from use of such information. Revisions or new editions of this publication may or may not be issued at our discretion to incorporate such changes. IRTC reserves the right to change specifications without notice. Illustrations and specifications shown may include optional equipment and accessories.



Scan Code  
to Learn More