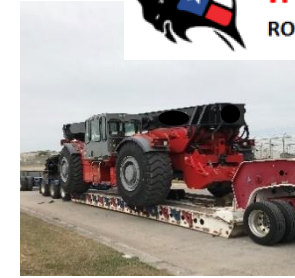




INDEPENDENT
ROUGH TERRAIN CENTER LLC

103 Guadalupe Dr
Cibolo Texas 78103
1-800-232-1236
WWW.IRTC-TX.com



Arrives assembled, ready to work in 15 min



40 PSI Ground Pressure empty,
80 PSI fully loaded (estimated)



4WD, 4WS, 20% Grade with 56,000 lbs



Unprepared operations, remote logistics

Go Anywhere



The RTCH is a Military Grade, Rough Terrain Container Handler (RTCH) 20 and 40' ISO container off-road lift on a US Army and USMC proven chassis 4 wheel drive and 4 wheel steering with low ground pressure, 400hp, 1,600 ft-lbs engine provides 27% gradeability at full load

The RTCH is mobilized with no disassembly Over the road movement less than 13.5' height, standard RGN trailer or railcar certified movement

Designed for in the field heavy lift Primary lift is 20-40' ISO containers Optional dual point 48,000lb sling lift 15MPH off road at full capacity



Containerized Logistics without infrastructure opens possibilities



What if intermodal containers were handled someplace besides at a fixed intermodal railyard?

Increased number of working locations, ability to use unprepared rail sidings as heavy logistics transfer points, mobility to match logistics varying demand

RTCH provides heavy lift directly to the point of use in unimproved environments

Supply chain is strengthened, more shipper options OTR trucking requirements are simplified/decreased Ability to store containers in multiple locations

SPECIFICALLY DESIGNED FOR:

- Transload container handling in Rough Terrain, without permanent infrastructure investment such as gantry cranes and foundation
- Exceptional mobility on-site, low ground pressure, year-round performance, sling load versatility
- Ease of transport via rail: no disassembly, 12' wide machine, ramp or crane offload
- High operator situational awareness and secure container movement
- Reliable performance & support in remote locations; pace setting workhorse

William "BIF" Mott, Col USAF (Retired), Director of Customer Solutions, 210-240-8872 William.mott@irtc-tx.com